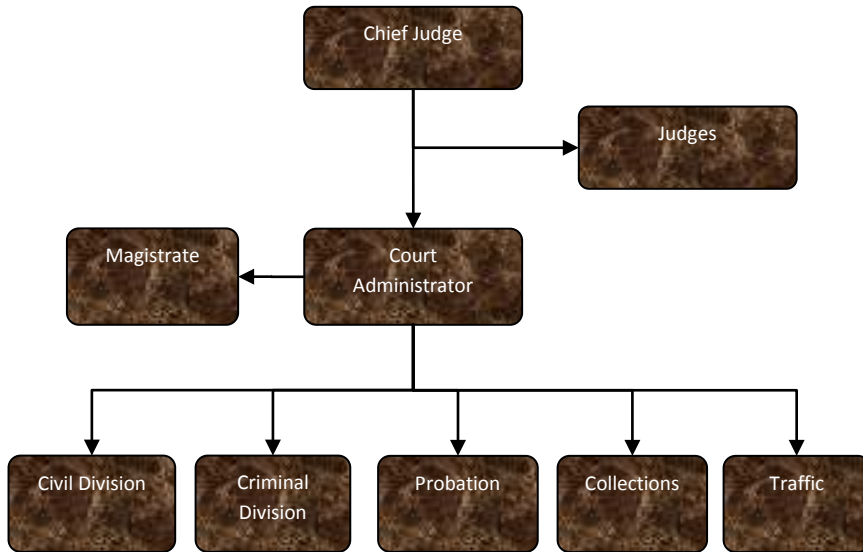


12th District Court



Activities

Consists of the Civil, Collections, Criminal, Probation and Traffic Departments

Processes all civil cases and schedules weddings which are performed by a judge or magistrate

Processes statute and ordinance misdemeanors and felony cases up to the preliminary examination stage

Collects delinquent fines and costs owed to the court and for the execution of criminal bench warrants

Conducts presentence investigations and bond investigations as ordered by the court, and supervises individuals placed on probation to ensure compliance with court orders

Processes violations; traffic, marine, snowmobile, conservation, dog law and parking



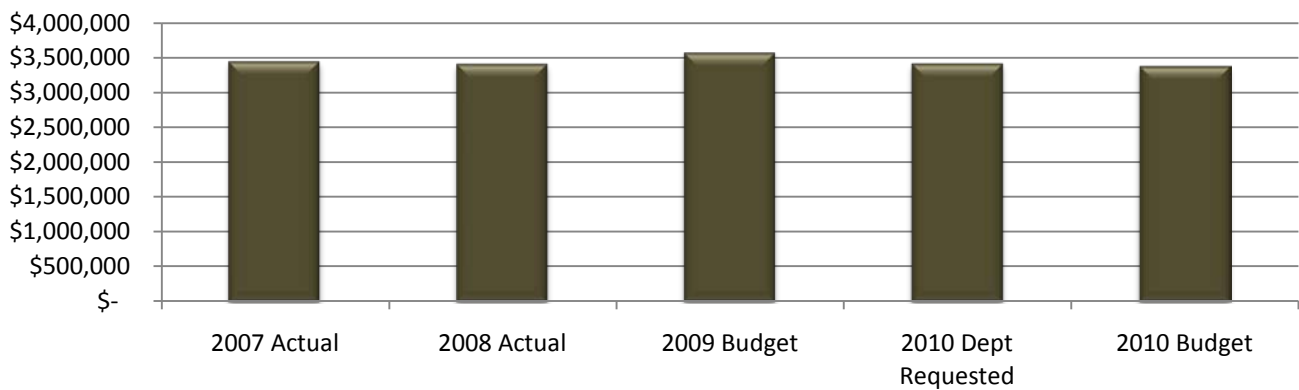
Mission Statement

The 12th Judicial District Court is dedicated to dispensing equal justice in all Matters under the court's jurisdiction, providing the highest quality of professional services in a prompt and efficient manner, and recognizing and respecting the individual dignity of all people served by the court.

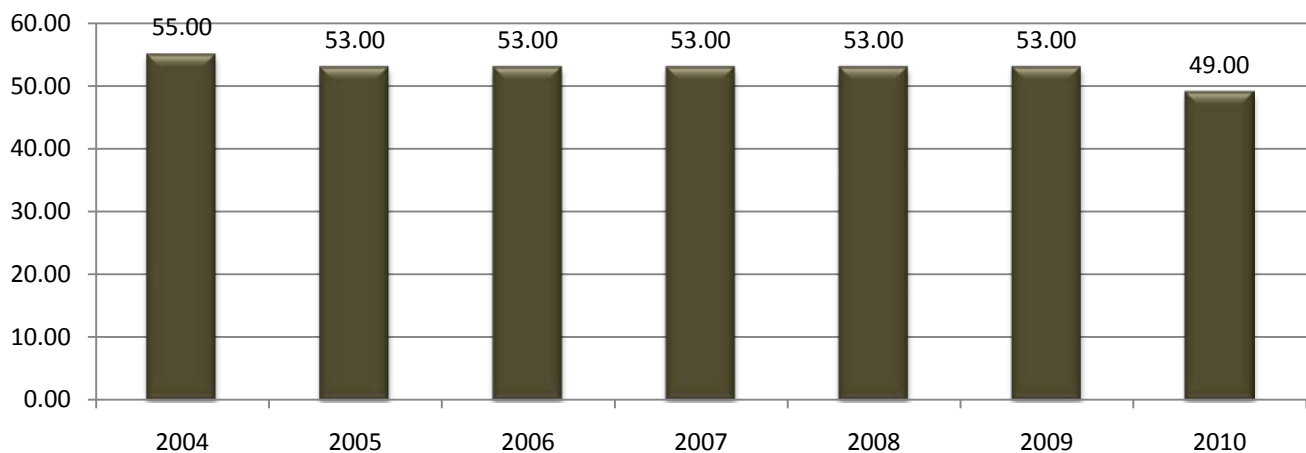
Expenditure History

	2007 <u>ACTUAL</u>	2008 <u>ACTUAL</u>	2009 <u>BUDGET</u>	2010 DEPT <u>REQUESTED</u>	2010 <u>BUDGET</u>
PERSONNEL SERVICES	2,962,319	3,007,063	3,158,911	2,966,710	2,966,710
SUPPLIES & MATERIALS	107,791	110,458	105,332	114,218	114,218
CONTRACT SERVICES	352,197	262,993	275,626	293,080	259,640
OTHER EXPENSES	24,865	26,211	30,782	37,882	37,882
TOTAL PROGRAM COST	\$ 3,447,172	\$ 3,406,725	\$ 3,570,651	\$ 3,411,890	\$ 3,378,450

12th District Court Expenditures



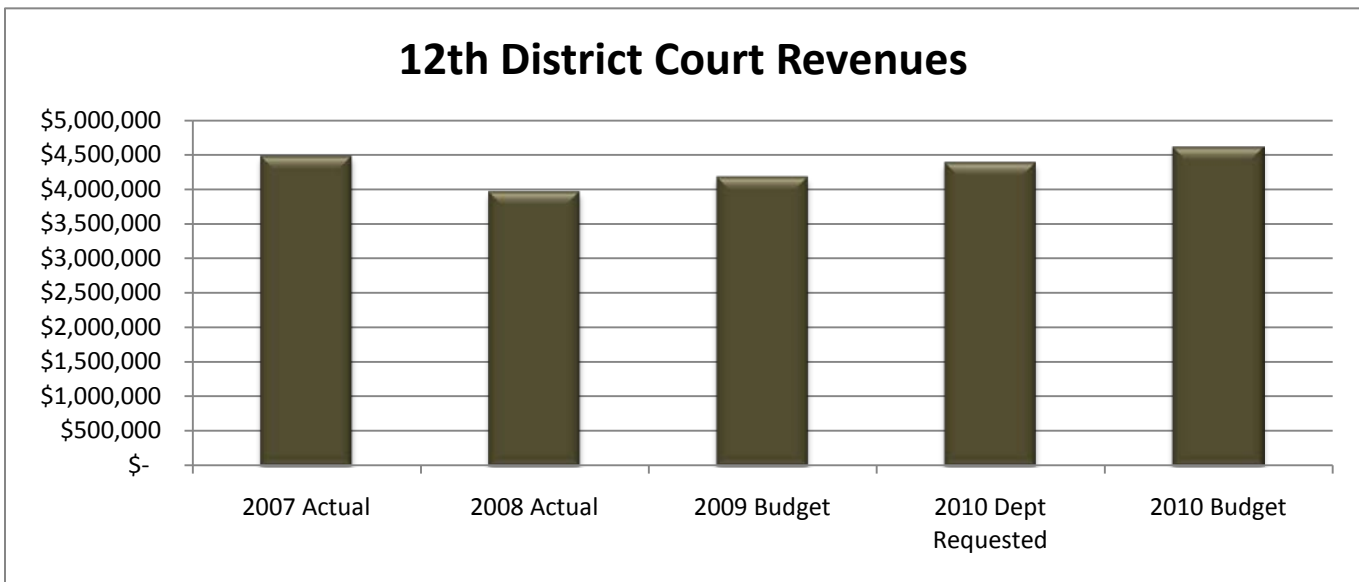
12th District Court FTE History



Revenue History

	2007 <u>ACTUAL</u>	2008 <u>ACTUAL</u>	2009 <u>BUDGET</u>	2010 DEPT <u>REQUESTED</u>	2010 <u>BUDGET</u>
CHARGES/FEES	2,700,392	2,459,521	2,551,200	2,739,770	2,739,770
FINES	1,576,009	1,286,173	1,408,900	1,431,300	1,431,300
INTERGOVERNMENTAL	170,762	182,446	182,900	182,900	404,900
OTHER	37,542	40,239	38,400	38,400	38,400
TOTAL PROGRAM COST	\$ 4,484,705	\$ 3,968,379	\$ 4,181,400	\$ 4,392,370	\$ 4,614,370

12th District Court Revenues



Strategic Plan Impact

√Safe Community

Base Budget Issues

The Court adjusted fees that had not been changed in many years. Those adjustments will result in increased revenues.

Budget Adjustments

The Community Corrections Program was operated by the Sheriff from inception. The

12th District Court agreed to run the program as it is closely related to other District Court efforts to divert individuals from being incarcerated. This change contributed to an increase in revenue.



This page intentionally left blank.