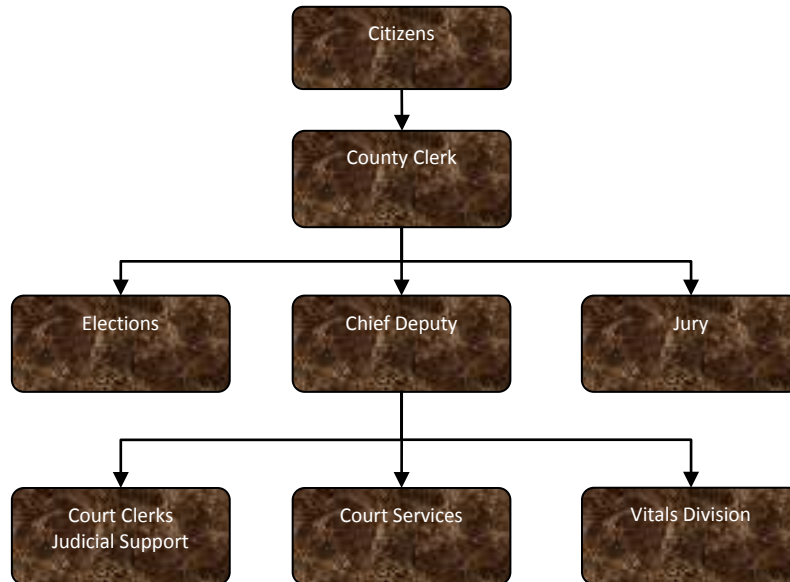


# County Clerk - General



## Activities

**Vital Statistics:** Birth and death certificates, marriage licenses, DBA's military discharges, passports, concealed weapon permits, passport & CCW photos, genealogy

**Court Services:** Receive filing fees, fines, court costs, accept new cases and pleadings for filing, docketing, prepare and monitor orders, submit reports to SCAO

**Court Clerks:** digitally record all court proceedings, docket court events, create a register of actions, swear in all witnesses and jurors, submit abstracts to SOS, prepare and mail orders, submit reports to SCAO

## Mission Statement

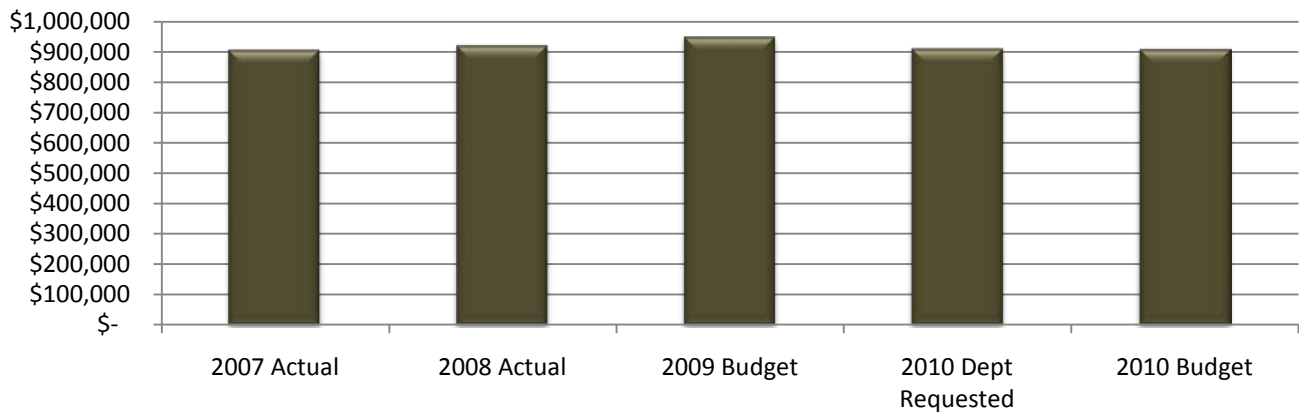
To inform and educate Jackson County residents as to their individual responsibility and privilege of serving as a juror in our court system. To improve and promote cooperation between the citizen and the courts which will enhance a more positive attitude of the public toward the court system in particular and the county government in general.



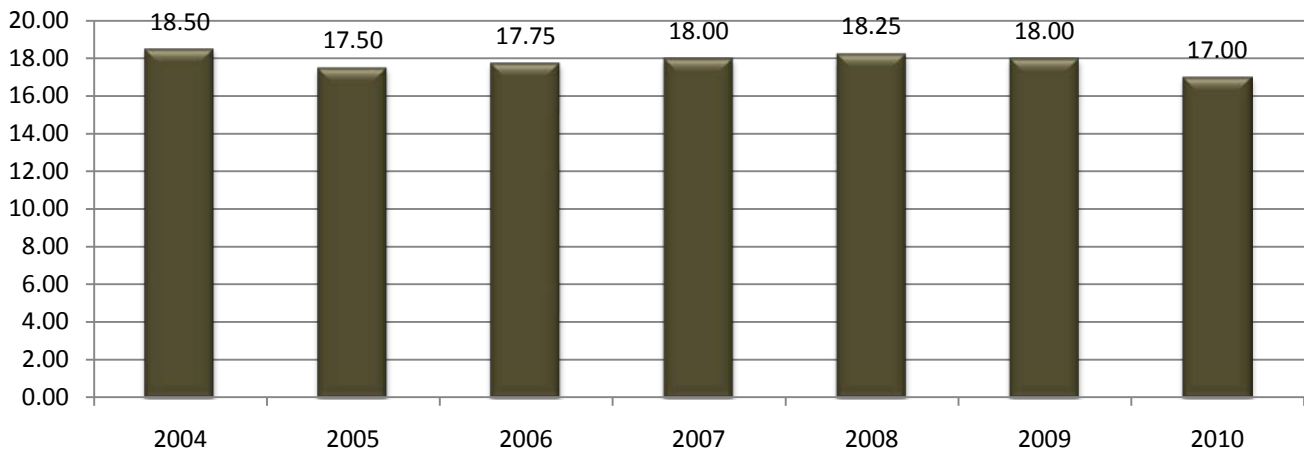
## Expenditure History

	2007 <u>ACTUAL</u>	2008 <u>ACTUAL</u>	2009 <u>BUDGET</u>	2010 DEPT <u>REQUESTED</u>	2010 <u>BUDGET</u>
PERSONNEL SERVICES	862,606	864,864	899,437	858,769	858,769
SUPPLIES & MATERIALS	25,159	33,076	27,954	31,323	28,954
CONTRACT SERVICES	9,997	15,619	14,488	14,488	14,488
OTHER EXPENSES	8,505	7,429	8,000	6,700	6,700
<b>TOTAL PROGRAM COST</b>	<b>\$906,267</b>	<b>\$920,988</b>	<b>\$949,879</b>	<b>\$911,280</b>	<b>\$908,911</b>

## County Clerk Expenditures



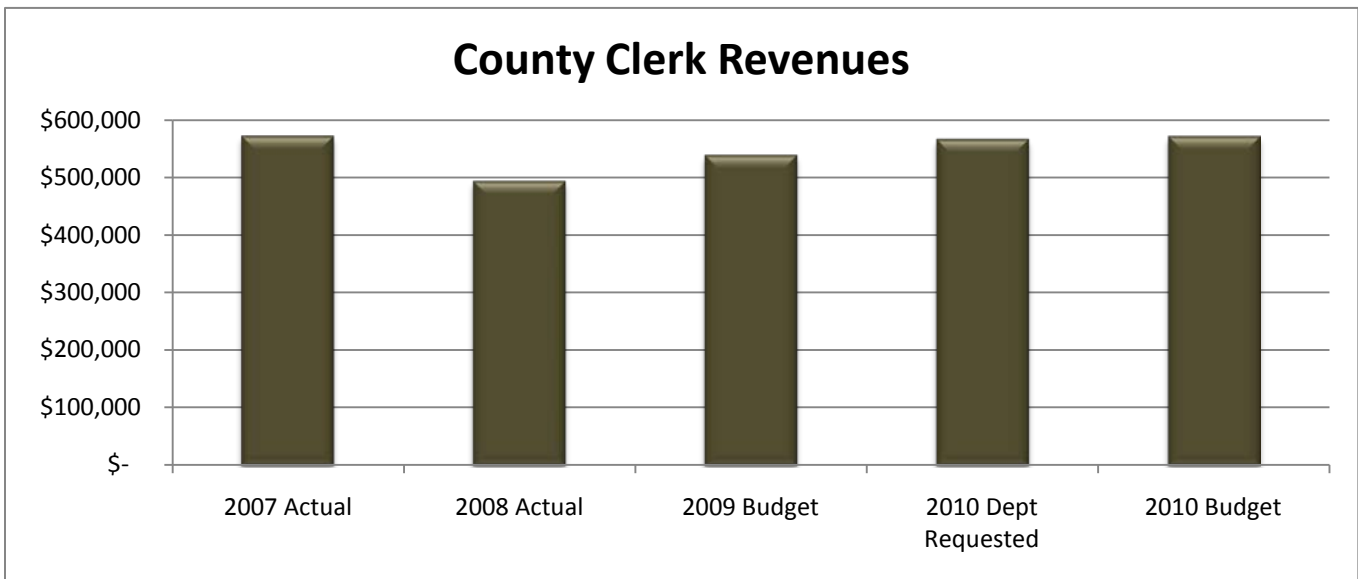
## County Clerk FTE History



Revenue History

	2007 <u>ACTUAL</u>	2008 <u>ACTUAL</u>	2009 <u>BUDGET</u>	2010 DEPT <u>REQUESTED</u>	2010 <u>BUDGET</u>
CHARGES/FEES	513,573	441,151	502,029	508,805	508,805
LICENSES/PERMITS	13,631	21,509	17,375	30,924	30,924
OTHER	44,117	30,112	18,379	25,869	30,869
<b>TOTAL PROGRAM COST</b>	<b>\$571,321</b>	<b>\$492,772</b>	<b>\$537,783</b>	<b>\$565,598</b>	<b>\$570,598</b>

County Clerk Revenues



Strategic Plan Impact

√Safe Community

Base Budget Issues

There are no significant changes to the Board of Commissioners base budget.

Budget Adjustments

Like most departments, the County Clerk has reduced personnel during the last few years.

An additional FTE is being removed from the 2010 budget.



This page intentionally left blank.