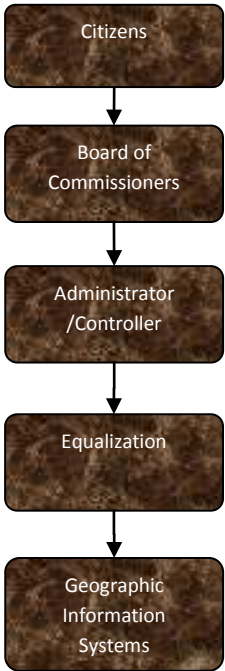


# Equalization

## Activities



### Mission Statement

Create & maintain an environment for open communication, coordination & collaboration of the GIS efforts in Jackson County. Promote, educate, & integrate the prevalent usage of GIS to allow increased productivity through accurate & informed decision making. Provide the general public, private sector & associated governmental agencies access to enhanced GIS services & products that will assist them in meeting their business needs. To efficiently create & maintain an enterprise based GIS which accurately & comprehensively represents all relevant County geographic data & information through workflow-driven development of GIS data & applications.

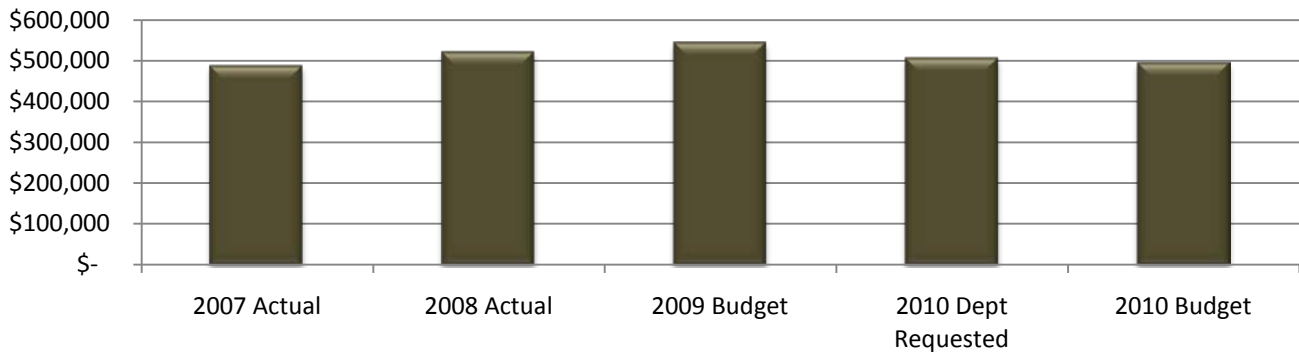


# Equalization

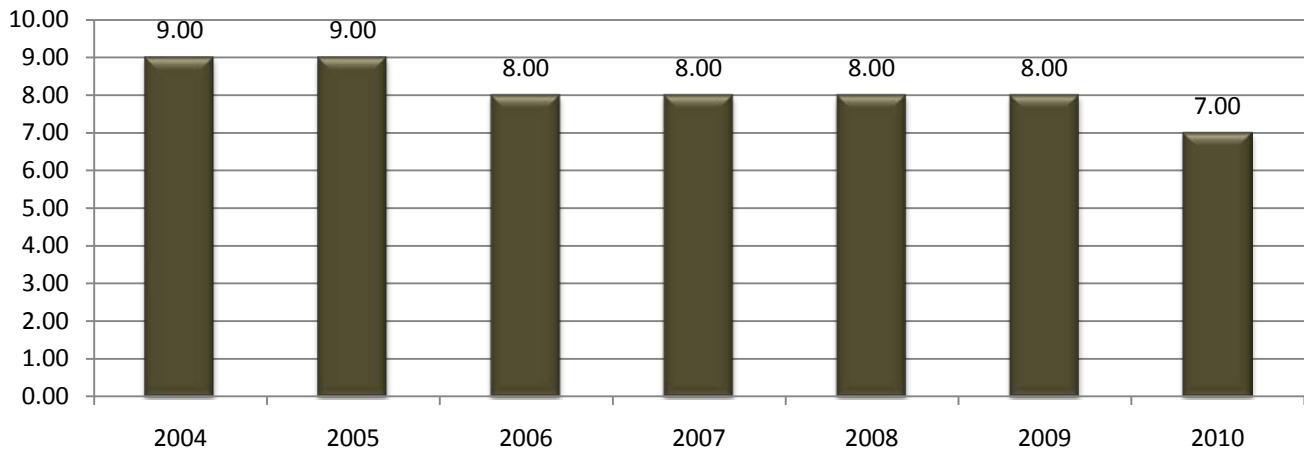
## Expenditure History

	2007 <u>ACTUAL</u>	2008 <u>ACTUAL</u>	2009 <u>BUDGET</u>	2010 DEPT <u>REQUESTED</u>	2010 <u>BUDGET</u>
PERSONNEL SERVICES	439,794	466,085	491,841	449,182	449,182
SUPPLIES & MATERIALS	25,306	23,033	21,300	23,350	21,350
CONTRACT SERVICES	8,428	12,518	7,500	8,500	7,500
OTHER EXPENSES	13,322	18,855	23,038	24,100	16,000
<b>TOTAL PROGRAM COST</b>	<b>\$486,850</b>	<b>\$520,491</b>	<b>\$543,679</b>	<b>\$505,132</b>	<b>\$494,032</b>

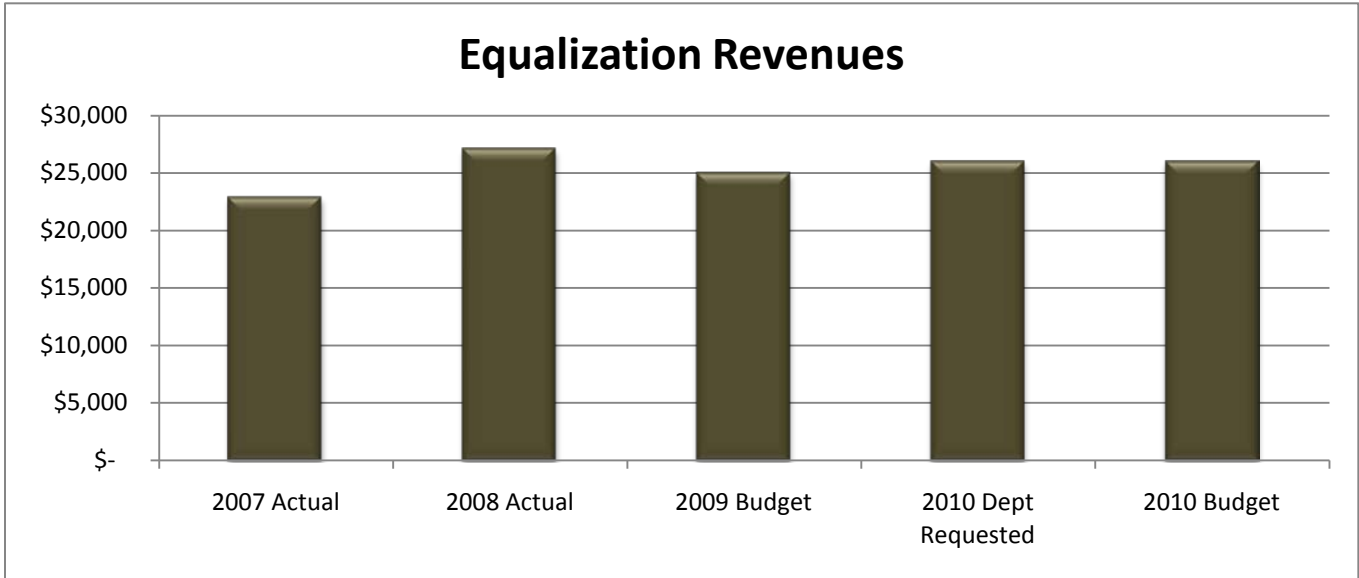
## Equalization Expenditures



## Equalization FTE History



Revenue History					
	2007 <u>ACTUAL</u>	2008 <u>ACTUAL</u>	2009 <u>BUDGET</u>	2010 DEPT <u>REQUESTED</u>	2010 <u>BUDGET</u>
CHARGES/FEES	22,885	27,117	25,000	26,000	26,000
<b>TOTAL PROGRAM COST</b>	\$22,885	\$27,117	\$25,000	\$26,000	\$26,000



**Strategic Plan Impact**

√Economic Development

**Base Budget Issues**

There are no significant changes to the Board of Commissioners base budget.

**Budget Adjustments**

Equalization is another department that will have lost staffing due to budget restraints. They will be down by two FTEs from 2004.



This page intentionally left blank.