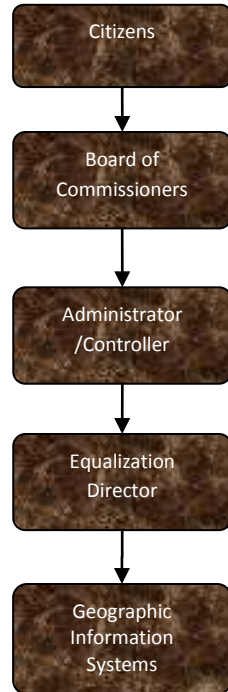


Geographic Information System



Activities

Promote, educate, & integrate the prevalent usage of GIS to allow increased productivity through accurate & informed decision making.

Provide the general public, private sector & associated governmental agencies access to enhanced GIS services & products that will assist them in meeting their business needs.

Efficiently create & maintain an enterprise based GIS which accurately & comprehensively represents all relevant County geographic data & information through workflow driven development of GIS data & applications.

Mission Statement

Create & maintain an environment for open communication, coordination & collaboration of the GIS efforts in Jackson County.

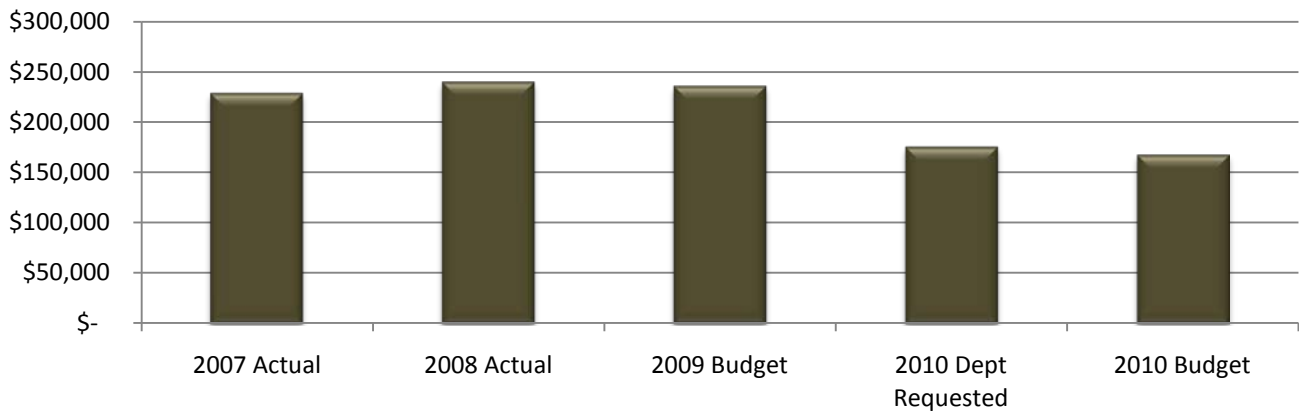


Equalization - GIS

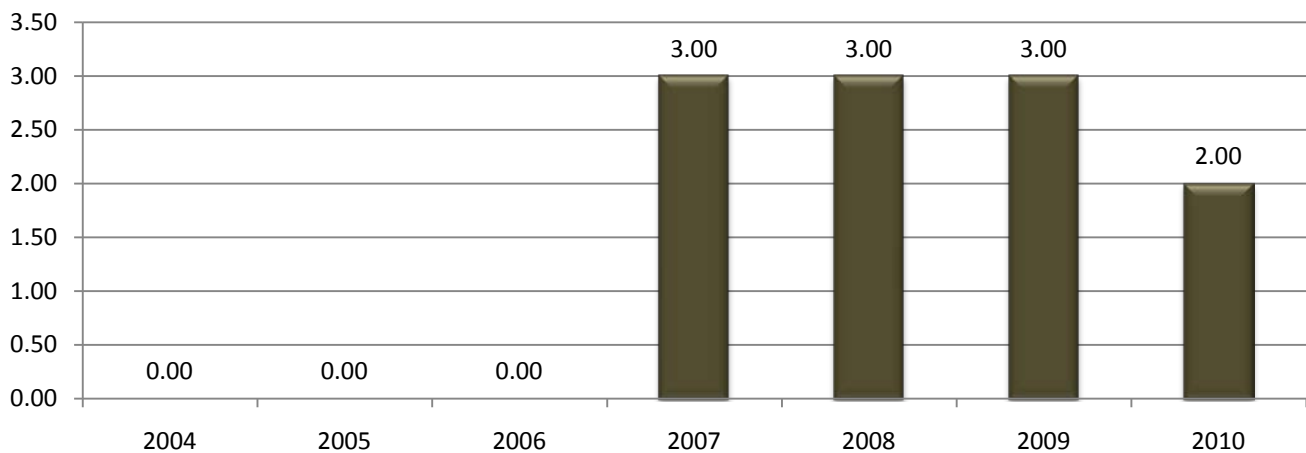
Expenditure History

	2007 <u>ACTUAL</u>	2008 <u>ACTUAL</u>	2009 <u>BUDGET</u>	2010 DEPT <u>REQUESTED</u>	2010 <u>BUDGET</u>
PERSONNEL SERVICES	181,883	199,235	200,393	141,431	141,431
SUPPLIES & MATERIALS	6,806	3,935	4,700	4,600	1,100
CONTRACT SERVICES	26,718	15,801	25,000	23,500	20,000
OTHER EXPENSES	12,752	20,243	4,950	5,560	4,560
TOTAL PROGRAM COST	\$228,159	\$239,214	\$235,043	\$175,091	\$167,091

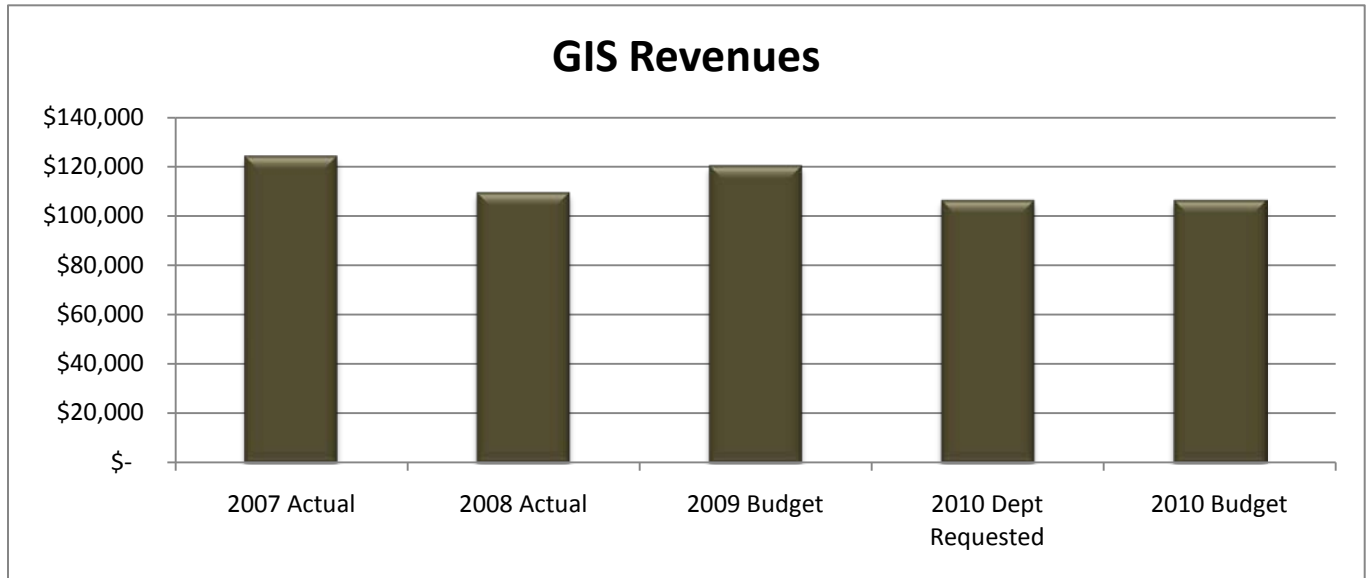
GIS Expenditures



Geographic Information Systems (GIS) FTE History



Revenue History					
	2007 <u>ACTUAL</u>	2008 <u>ACTUAL</u>	2009 <u>BUDGET</u>	2010 DEPT <u>REQUESTED</u>	2010 <u>BUDGET</u>
CHARGES/FEES	124,008	109,150	120,000	106,000	106,000
TOTAL PROGRAM COST	\$124,008	\$109,150	\$120,000	\$106,000	\$106,000



Strategic Plan Impact

√Economic Development

Base Budget Issues

The Jackson County Road Commission had been funding one FTE in the GIS Department. That funding was reduced to one-half FTE in 2010.

Budget Adjustments

The staff in GIS will be reduced by one FTE in 2010 as part of the budget reduction efforts

and as a result of the loss of Road Commission funding.



This page intentionally left blank.