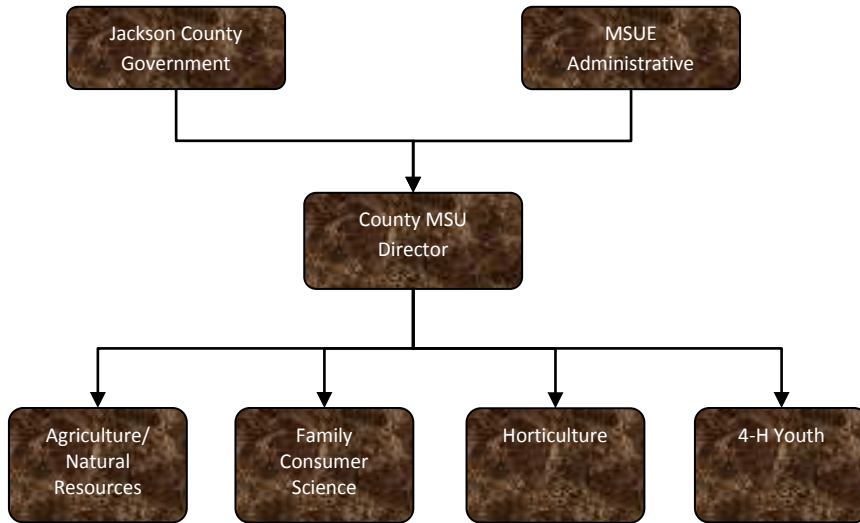


MSU Extension



Activities

Provide educational programming in agriculture and natural resources programming in land use, watershed and pesticide management and farm financial stability. Provide educational materials through Connections and the website.

Provide educational programming to pork producers (including principal enterprise and youth) throughout the state in regard to swine production management and nutrition.

Extension 4-H Youth Program -works with youth ages 5-19 and adult volunteers in skill training in character development, leadership, self-esteem and health life style choices.

Provide Jackson County residents with educational programs on care and maintenance of their land.

Provide educational programs and information through use of media, one-on-one contact, and educational classroom setting.

Provide educational leadership to create an economical and sociological sustainable agriculture in order to retain farmers, farmland, open space and the resulting

Mission Statement

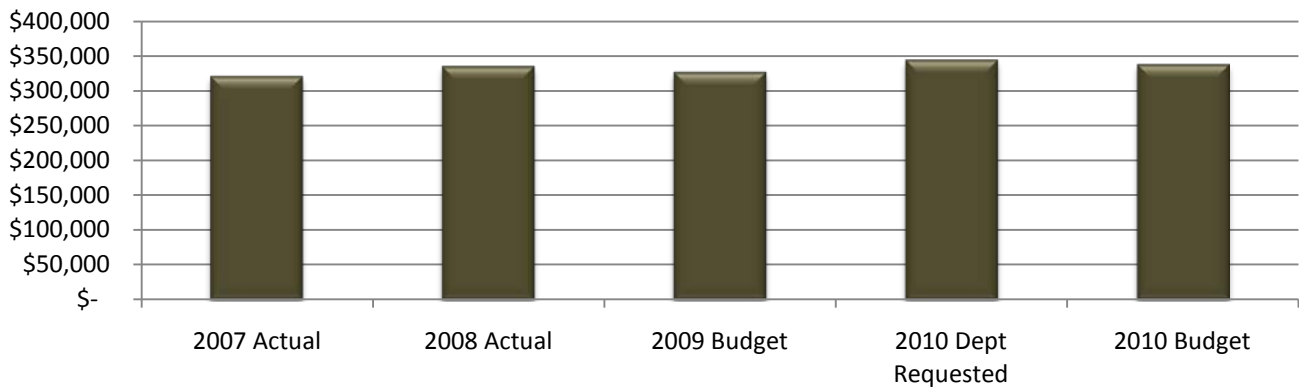
Jackson County is an educational leader working with local citizens, government and community organizations, which is based on university research and involves learners in setting goals and applying knowledge for a better life.

MSU Extension

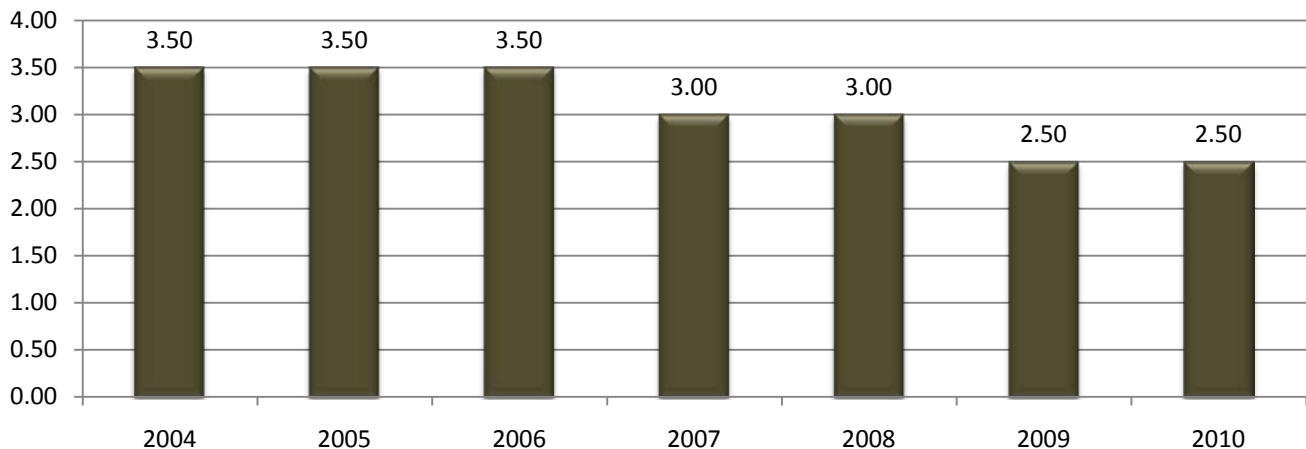
Expenditure History

	2007 <u>ACTUAL</u>	2008 <u>ACTUAL</u>	2009 <u>BUDGET</u>	2010 DEPT <u>REQUESTED</u>	2010 <u>BUDGET</u>
PERSONNEL SERVICES	132,366	134,276	119,029	124,985	123,985
SUPPLIES & MATERIALS	37,088	31,646	25,400	25,400	25,400
CONTRACT SERVICES	138,004	153,326	166,412	174,732	174,732
OTHER EXPENSES	13,036	15,565	15,550	18,800	13,300
TOTAL PROGRAM COST	\$320,494	\$334,813	\$326,391	\$343,917	\$337,417

MSU Extension Expenditures



MSU Extension FTE History



Revenue History

	2007 <u>ACTUAL</u>	2008 <u>ACTUAL</u>	2009 <u>BUDGET</u>	2010 DEPT <u>REQUESTED</u>	2010 <u>BUDGET</u>
TOTAL PROGRAM COST	\$0	\$0	\$0	\$0	\$0

Strategic Plan Impact

✓ Economic Development

✓ Healthy Community



This page intentionally left blank.