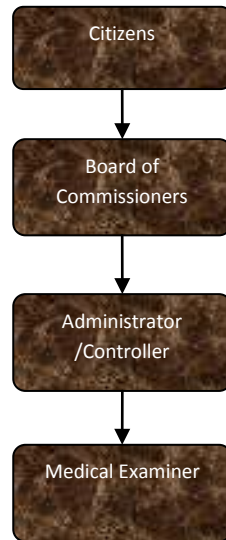


Medical Examiner



Activities

It is the duty of this office to investigate in certain instances the cause and manner of death within this country due to acts of violence, negligence or omission of a criminal nature and/or threats to protect public health.

Our office consists of two actual employees, the Medical Examiner and his Assistant.

We contract for services of pathology assistants, forensic pathologists, forensic dentists, body removal services, field investigators, morgue facilities and deputy medical examiner services.

All contracted individuals work on an on-call basis and respond when needed to carefully study the circumstances and facts surrounding a case and coordinate their efforts to be most effective.

Mission Statement

It is the mission of this office to complete an efficient, professional and dignified investigation of any death reported to this office which falls under the guidelines set forth by the State of Michigan and having occurred within the County of Jackson in order to determine cause and manner of death.

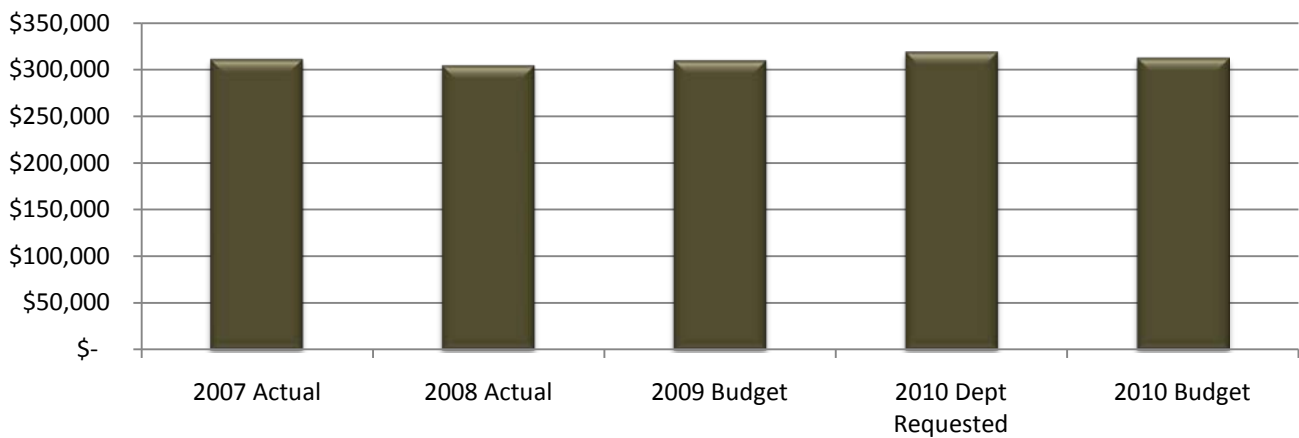


Medical Examiner

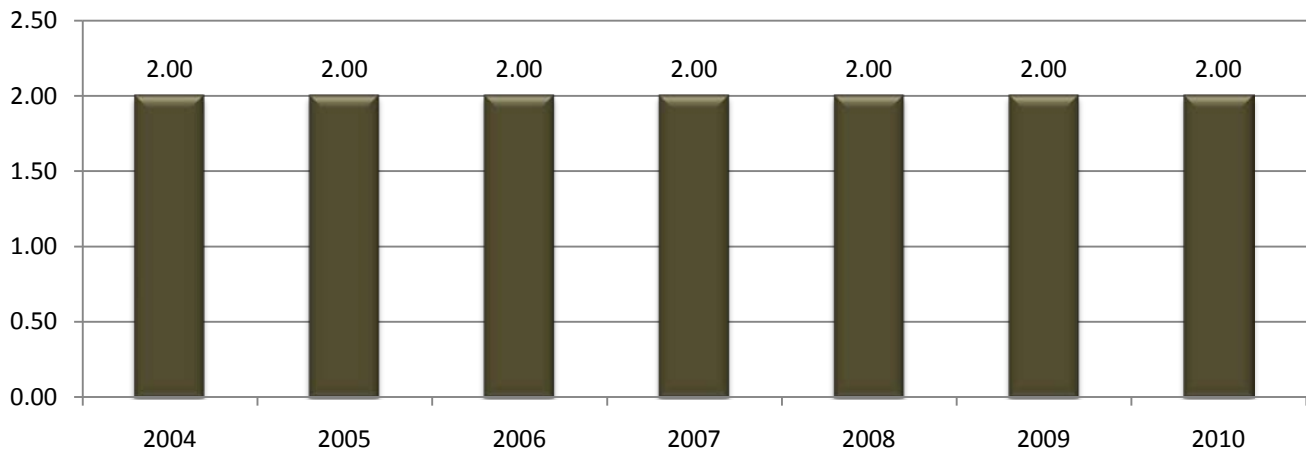
Expenditure History

	2007 <u>ACTUAL</u>	2008 <u>ACTUAL</u>	2009 <u>BUDGET</u>	2010 DEPT <u>REQUESTED</u>	2010 <u>BUDGET</u>
PERSONNEL SERVICES	80,987	82,587	83,473	83,974	83,974
SUPPLIES & MATERIALS	5,183	4,792	5,675	11,760	5,775
CONTRACT SERVICES	214,504	209,261	210,450	212,450	212,450
OTHER EXPENSES	10,792	7,881	10,472	11,277	10,577
TOTAL PROGRAM COST	\$311,466	\$304,521	\$310,070	\$319,461	\$312,776

Medical Examiners Expenditures



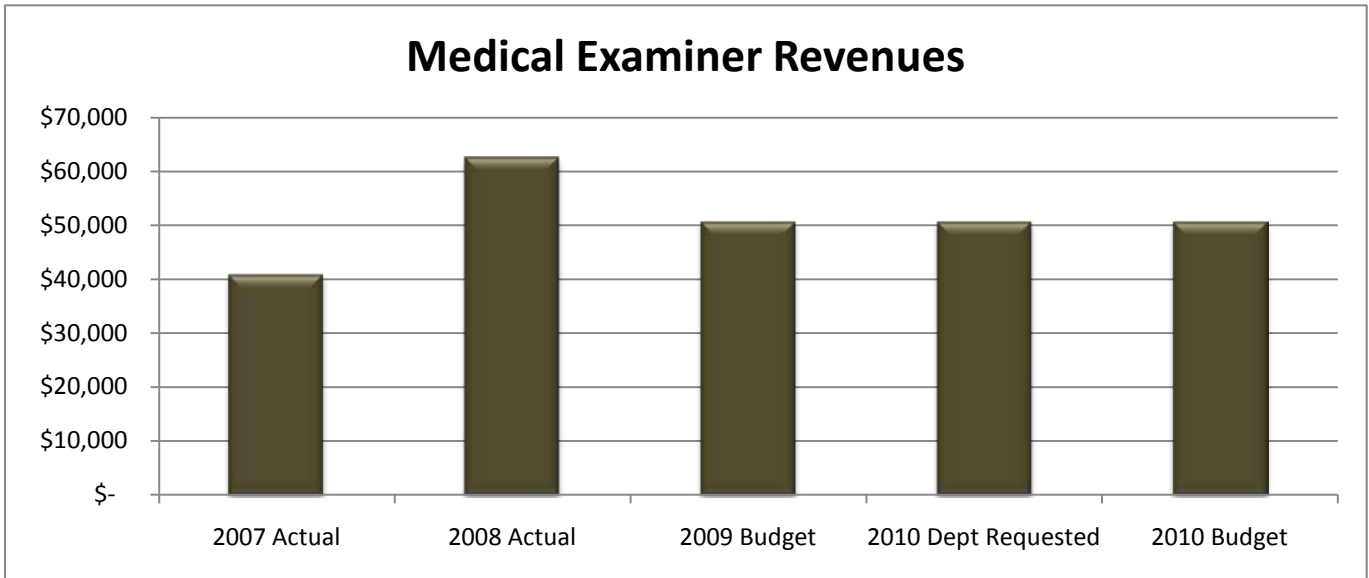
Medical Examiner FTE History



Revenue History

	2007 <u>ACTUAL</u>	2008 <u>ACTUAL</u>	2009 <u>BUDGET</u>	2010 DEPT <u>REQUESTED</u>	2010 <u>BUDGET</u>
CHARGES/FEES	40,845	62,540	50,500	50,500	50,500
TOTAL PROGRAM COST	\$40,845	\$62,540	\$50,500	\$50,500	\$50,500

Medical Examiner Revenues



Strategic Plan Impact

- ✓ Safe Community

Accomplishments

Base Budget Issues

Budget Adjustments



This page intentionally left blank.