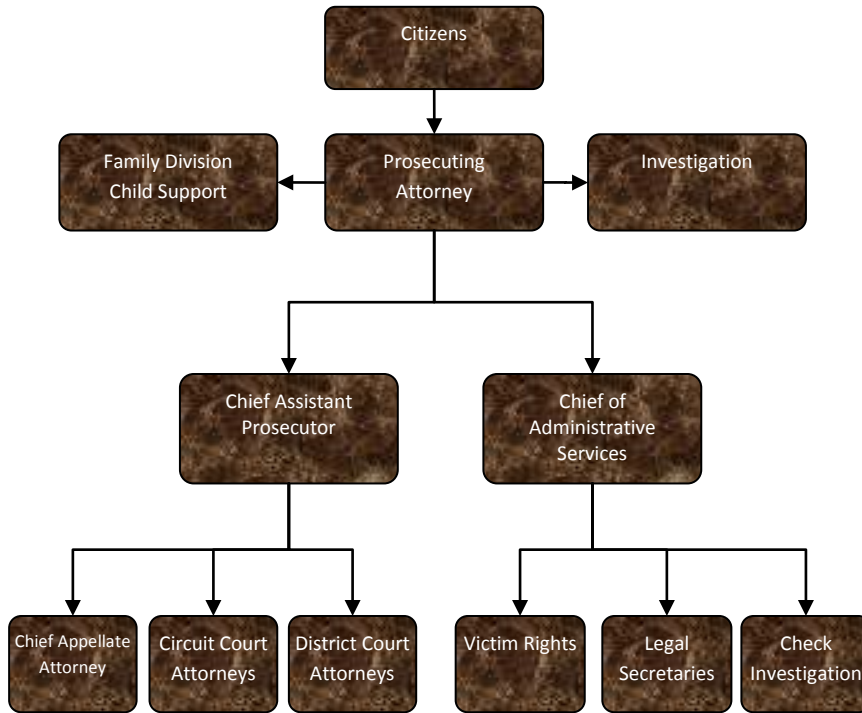


Family Division



Activities

Pursuant to a Cooperative Reimbursement Agreement with the Family Independence Agency, the division seeks to establish paternity and child support orders.

We also spend time cleaning up old cases for the Office of Child Support and fielding calls for the FOC.



Mission Statement

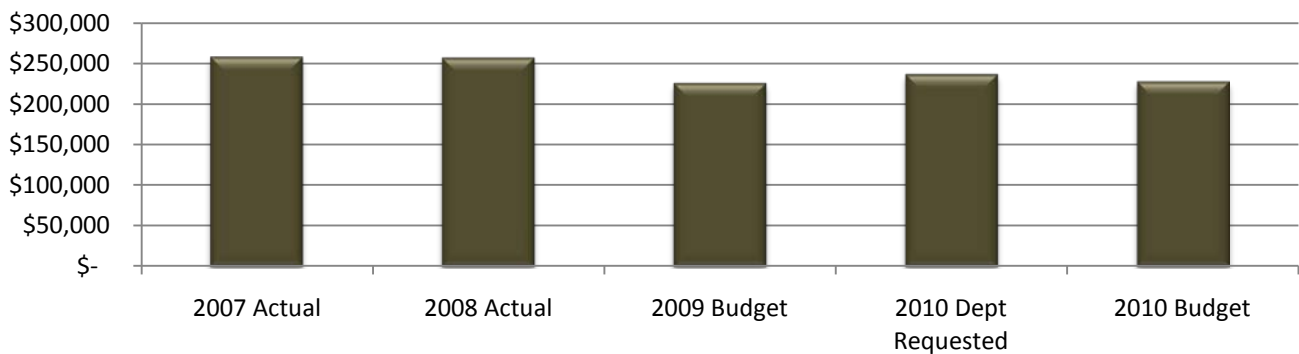
The sole mission of the Family Division of the Prosecuting Attorney's Office is to obtain child support and paternity orders for TANF and non-TANF custodial parents pursuant to requirements of Michigan law and an agreement with the Michigan Department of Human Services.

Prosecuting Attorney – Family Division

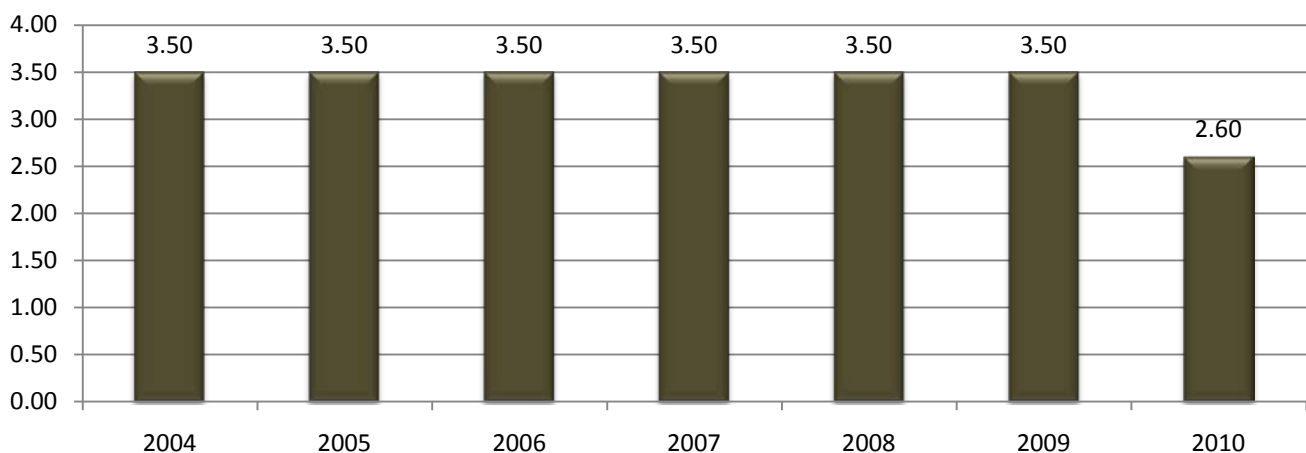
Expenditure History

	2007 <u>ACTUAL</u>	2008 <u>ACTUAL</u>	2009 <u>BUDGET</u>	2010 DEPT <u>REQUESTED</u>	2010 <u>BUDGET</u>
PERSONNEL SERVICES	239,773	239,447	206,469	217,273	209,524
SUPPLIES & MATERIALS	8,730	8,540	7,070	7,370	7,370
CONTRACT SERVICES	6,601	7,219	7,200	7,200	7,200
OTHER EXPENSES	1,907	849	3,963	3,900	2,500
TOTAL PROGRAM COST	\$257,011	\$256,055	\$224,702	\$235,743	\$226,594

Prosecuting Attorney Family Division Expenditures



Prosecuting Attorney/Family Division FTE History

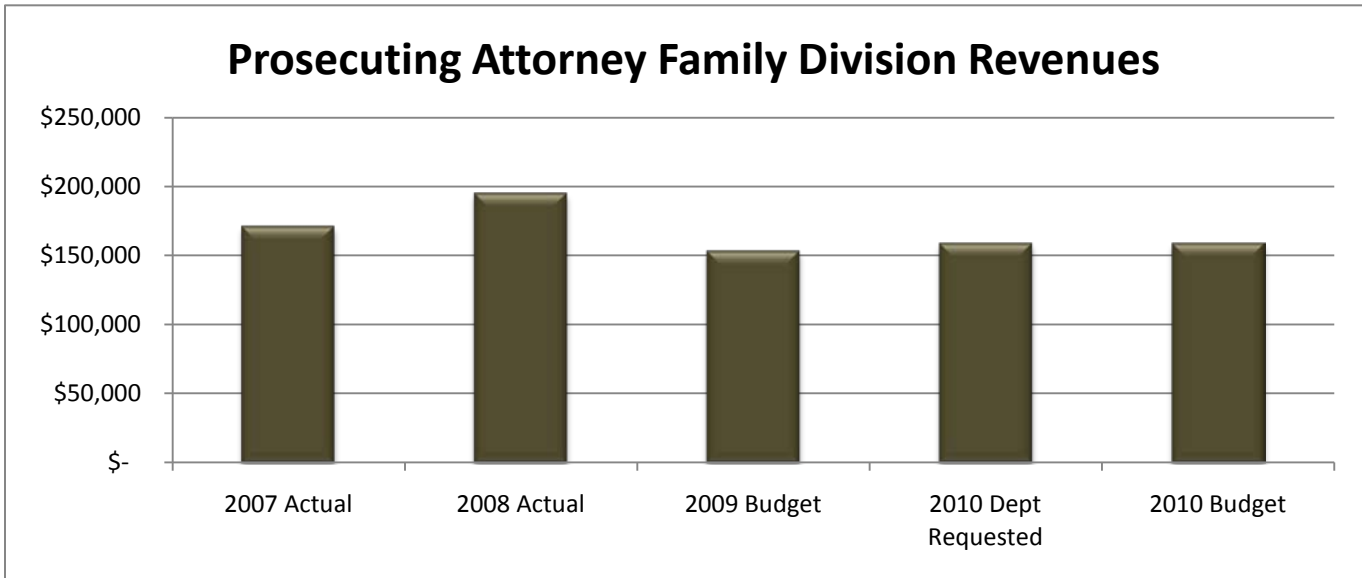


Prosecuting Attorney – Family Division

Revenue History

	2007 <u>ACTUAL</u>	2008 <u>ACTUAL</u>	2009 <u>BUDGET</u>	2010 DEPT <u>REQUESTED</u>	2010 <u>BUDGET</u>
INTERGOVERNMENTAL	170,465	194,389	152,605	158,314	158,314
TOTAL PROGRAM COST	\$170,465	\$194,389	\$152,605	\$158,314	\$158,314

Prosecuting Attorney Family Division Revenues



Strategic Plan Impact

√ Safe Community

Base Budget Issues

Revenues are reduced by 66% of expense reductions per the cooperative reimbursement program with the State.

Budget Adjustments

One FTE has been eliminated from this budget as part of the FTE reduction effort.



This page intentionally left blank.