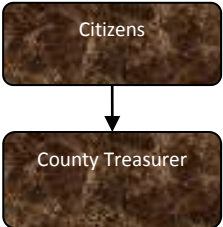


County Treasurer



Activities

- Manage cash and investments
- Serve as Treasurer to other authorities
- Receipt, record, and reconcile revenue
- Collect/distribute current and delinquent property taxes
- Issue dog licenses and maintain records
- Search title record of forfeited properties
- Hold public auction of foreclosed properties
- Settlement of current taxes with 63 taxing jurisdictions
- Property management and maintenance of foreclosed properties
- Principle residence exemptions
- State Tax Commission
- Michigan Tax Tribunal

Mission Statement

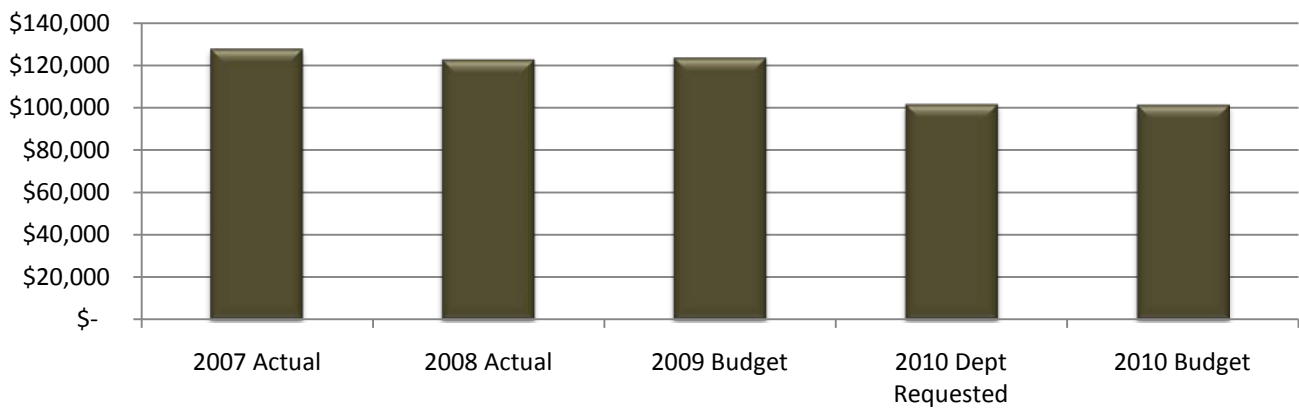
To continually strive for equality and compassion in assisting tax payers and to promote economic development through intergovernmental agencies.



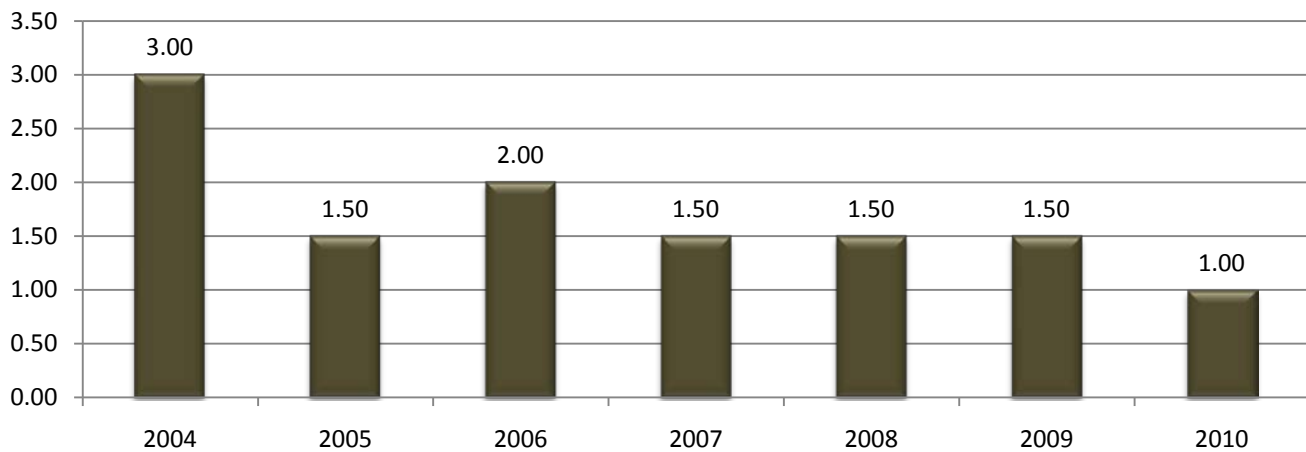
Expenditure History

	2007 <u>ACTUAL</u>	2008 <u>ACTUAL</u>	2009 <u>BUDGET</u>	2010 DEPT <u>REQUESTED</u>	2010 <u>BUDGET</u>
PERSONNEL SERVICES	115,246	113,789	115,956	91,463	91,463
SUPPLIES & MATERIALS	8,653	6,417	4,600	7,400	7,400
CONTRACT SERVICES	1,155	34	800	700	700
OTHER EXPENSES	2,697	2,323	2,146	1,896	1,700
TOTAL PROGRAM COST	\$127,751	\$122,563	\$123,502	\$101,459	\$101,263

County Treasurer Expenditures



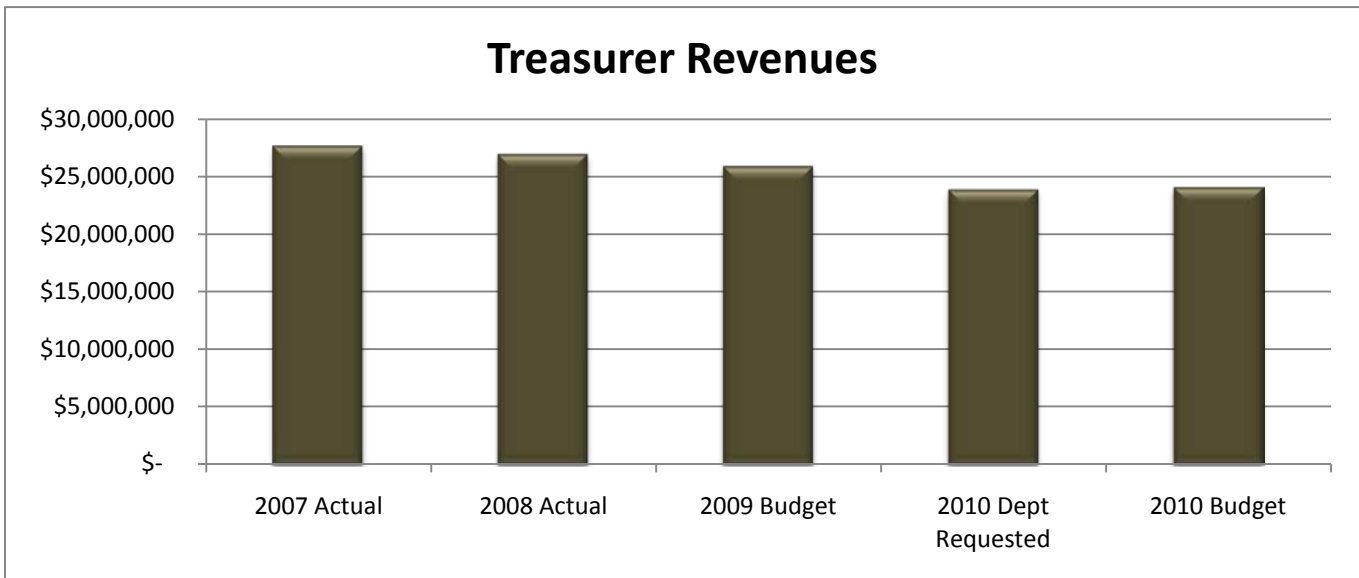
County Treasurer FTE History



Revenue History

	2007 <u>ACTUAL</u>	2008 <u>ACTUAL</u>	2009 <u>BUDGET</u>	2010 DEPT <u>REQUESTED</u>	2010 <u>BUDGET</u>
INTEREST/RENTS	2,046,986	1,706,735	1,000,000	800,000	800,000
TAXES	23,036,818	22,536,048	22,224,500	20,575,147	20,781,885
CHARGES/FEES	11,742	11,078	10,000	10,000	10,000
LICENSES/PERMITS	58,564	63,024	60,000	60,000	60,000
INTERGOVERNMENTAL	1,801,349	1,855,959	1,844,325	1,679,252	1,774,914
OTHER	757,089	804,377	779,895	774,895	644,895
TOTAL PROGRAM COST	\$27,712,548	\$26,977,221	\$25,918,720	\$23,899,294	\$24,071,694

Treasurer Revenues



Strategic Plan Impact

- ✓ Economic Development

Accomplishments

The County Treasurer has provided more options to county citizens and business owners by allowing payments of delinquent taxes to be made online and by credit card. Additional enhancements were made against fraud through instant check verification.

Base Budget Issues

Due to local property values, County property tax revenues are expected to decrease by 8.7% in Fiscal Year 2010. Total tax losses from 2009 to 2010 will be \$1,442,615.

Due to the national economic downturn, the county expects to receive less return on investments for an anticipated loss of approximately \$200,000 in interest income. Including the 8.7% reduction in property tax

County Treasurer

revenue as well as other declining revenues the county will experience a total decrease of \$1,847,026 from the County Treasurer's revenues.

Budget Adjustments

The County Treasurer reduced personnel costs to the general fund through the transfer of half a full-time employee to delinquent tax collections for a general fund savings of approximately \$24,493.