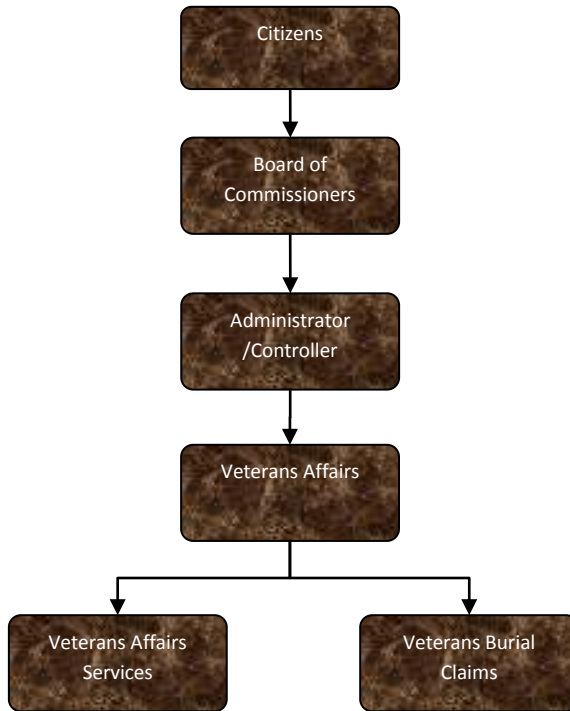


Veterans Affairs



Activities

Serve as the veteran's representative to assist veterans and their families in exploring and applying for a wide range of VA benefits.

These benefits include, but are not limited to; disability compensation & pension, education & training, career exploration, home loans, burial benefits, dependent & survivor benefits, healthcare and life insurance claims.

Assist veterans in coordinating social services through related state and local agencies. All Michigan counties are mandated to provide relief and burial benefits to eligible veterans and their family members.

There are 14,500 veterans from Jackson County in the VA census that bring \$14,466,000 into the county in VA benefit money; our focus is to increase those numbers by creating more public awareness of the functions of this office.



Mission Statement

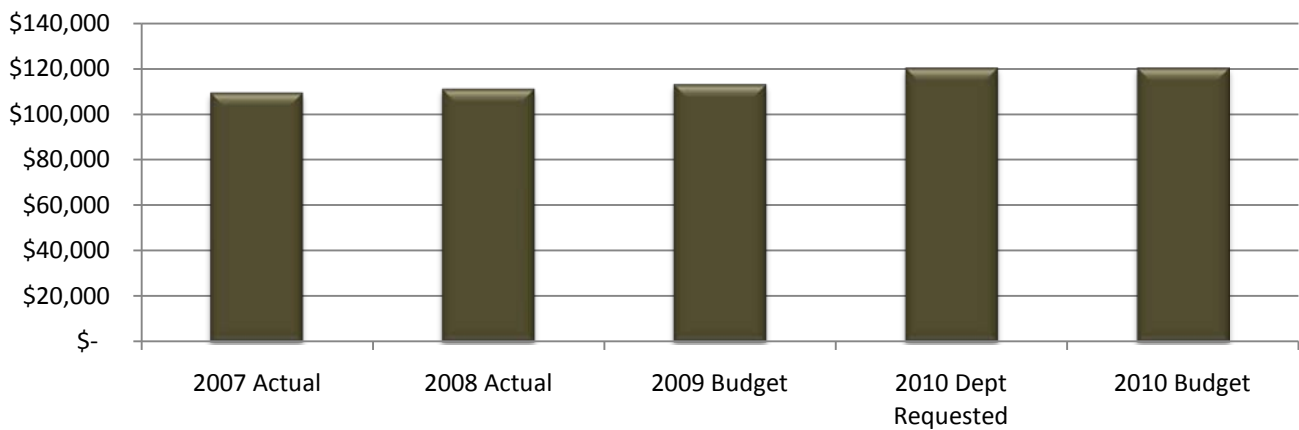
The Department of Veteran Affairs is committed to promoting veteran rights while assisting veterans in coordination of entitlements through VA, the State of Michigan and county agencies.

Veterans Affairs

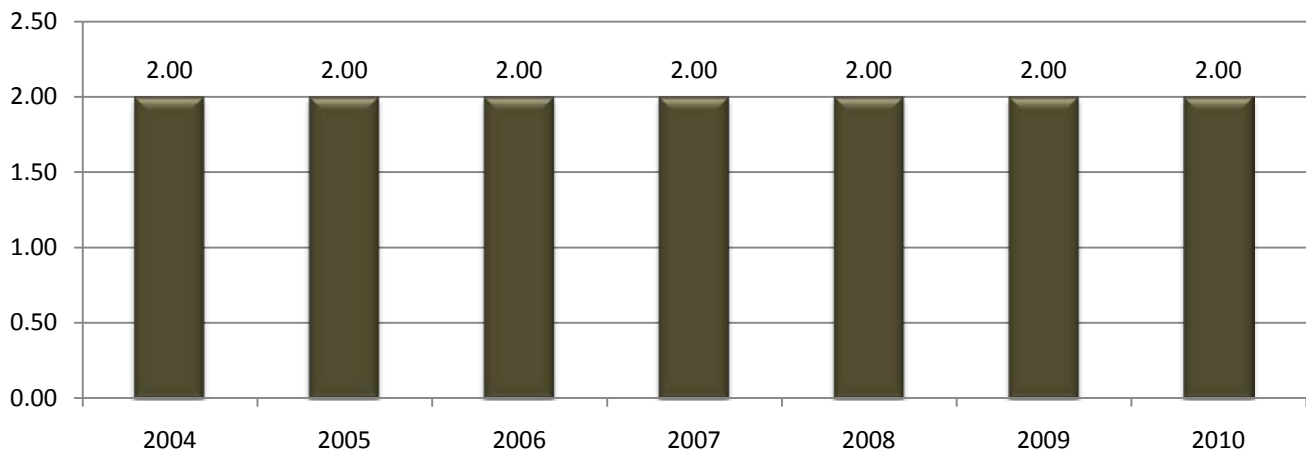
Expenditure History

| | 2007 <u>ACTUAL</u> | 2008 <u>ACTUAL</u> | 2009 <u>BUDGET</u> | 2010 DEPT <u>REQUESTED</u> | 2010 <u>BUDGET</u> |
|---------------------------|-----------------------|-----------------------|-----------------------|-------------------------------|-----------------------|
| PERSONNEL SERVICES | 102,339 | 104,100 | 105,043 | 112,364 | 112,364 |
| SUPPLIES & MATERIALS | 2,310 | 2,615 | 3,449 | 3,449 | 3,449 |
| CONTRACT SERVICES | 2,498 | 2,149 | 1,947 | 1,947 | 1,947 |
| OTHER EXPENSES | 2,231 | 2,235 | 2,665 | 2,665 | 2,665 |
| TOTAL PROGRAM COST | \$109,378 | \$111,099 | \$113,104 | \$120,425 | \$120,425 |

Veterans Affairs Expenditures



Veterans Affairs FTE History



Revenue History

| | 2007 <u>ACTUAL</u> | 2008 <u>ACTUAL</u> | 2009 <u>BUDGET</u> | 2010 DEPT <u>REQUESTED</u> | 2010 <u>BUDGET</u> |
|--------------------|-----------------------|-----------------------|-----------------------|-------------------------------|-----------------------|
| TOTAL PROGRAM COST | \$0 | \$0 | \$0 | \$0 | \$0 |

Strategic Plan Impact

- ✓ Healthy Community



This page intentionally left blank.