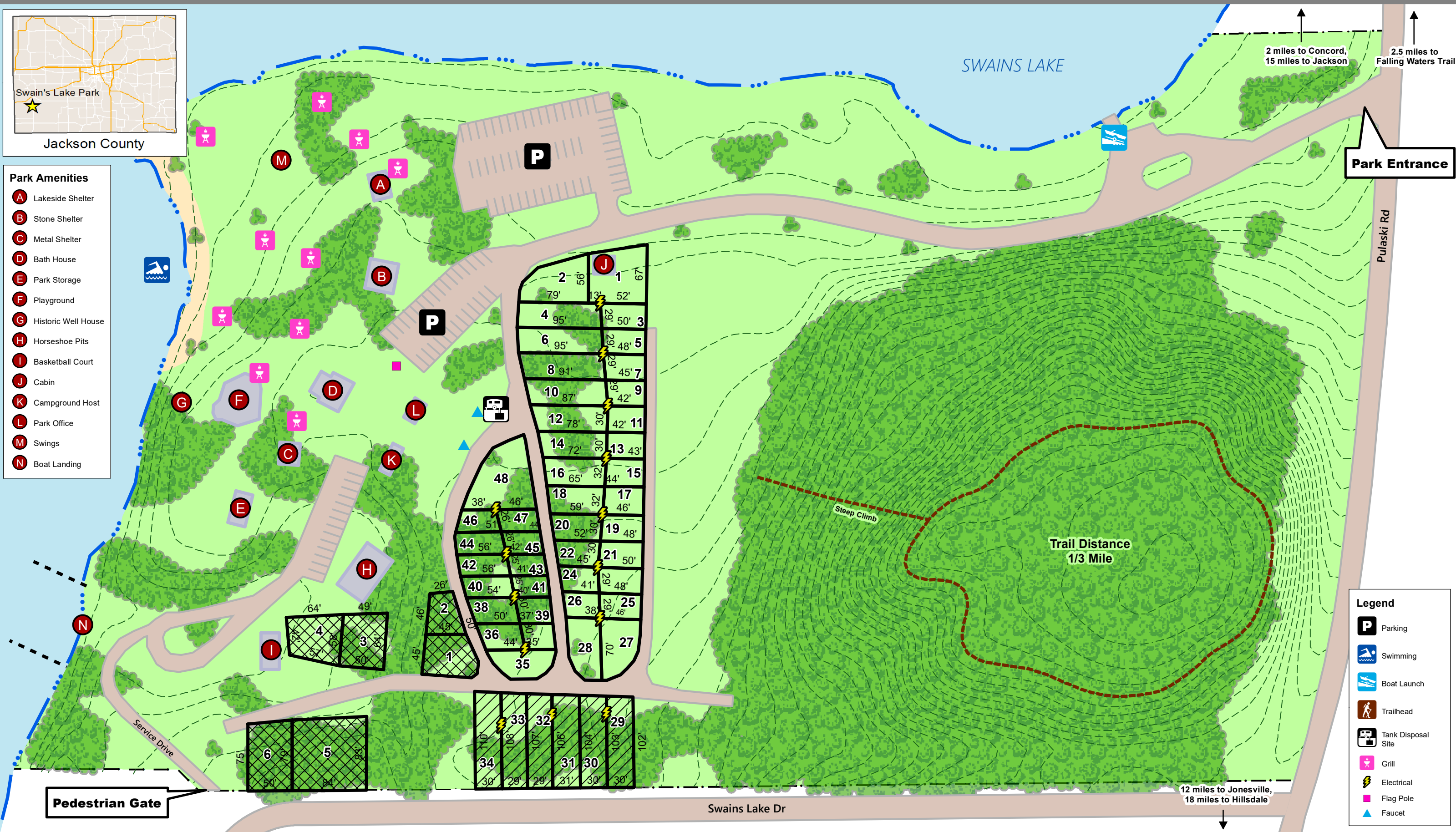


- Park Amenities**
- A** Lakeside Shelter
 - B** Stone Shelter
 - C** Metal Shelter
 - D** Bath House
 - E** Park Storage
 - F** Playground
 - G** Historic Well House
 - H** Horseshoe Pits
 - I** Basketball Court
 - J** Cabin
 - K** Campground Host
 - L** Park Office
 - M** Swings
 - N** Boat Landing



Park Entrance

Pedestrian Gate

- Legend**
- P** Parking
 - Swimming
 - Boat Launch
 - Trailhead
 - Tank Disposal Site
 - Grill
 - Electrical
 - Flag Pole
 - Faucet

jacksoncountyparks.org
 Campground office phone: 517-524-7666
 For all emergencies dial 911



SWAINS LAKE COUNTY PARK & CAMPGROUND

7400 Pulaski Rd Concord, MI 49237
 Entrance Coordinates: 42.154° N, 84.645° W



Map prepared by Jackson County GIS on 4/1/2020