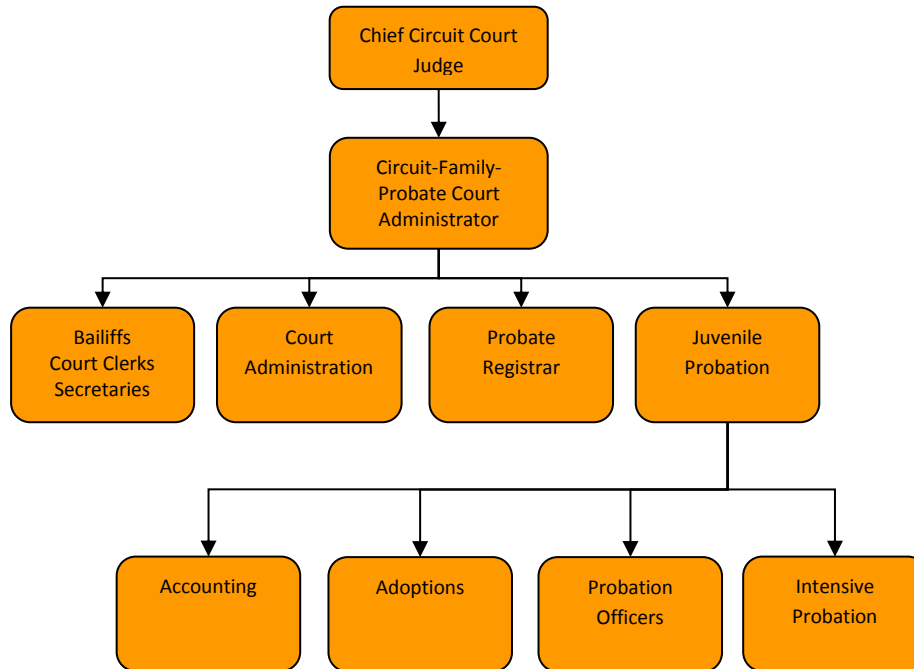


Circuit Court



Mission Statement

Jackson County Circuit-Family-Probate Court provides fair, accessible, effective, and responsive forums for the resolution of civil and criminal matters.

Programs

[Circuit, Family, and Probate Court](#)

[Circuit Court Probation](#)

Circuit Court

Activities

Circuit-Family-Probate Court serves as trial court of general jurisdiction for Jackson County—felonies, major civil cases, domestic relations, appeals from lower jurisdiction/ agencies courts.

Probate, Estate Division has exclusive legal and equitable jurisdiction in matters relating to settlement of estate of deceased persons, proceedings concerning trusts, guardianships, conservatorships, and proceedings to review and settle the account of a fiduciary.

Family Court has jurisdiction in juvenile delinquency, neglect, abuse, adoption proceedings and juvenile traffic offenses.

Circuit-Family Court is responsible for operation of other arms of the court: Friend of the Court, ADR, Jury Commission and the Law Library.

Strategic Plan Impact

✓ **Safe Community**

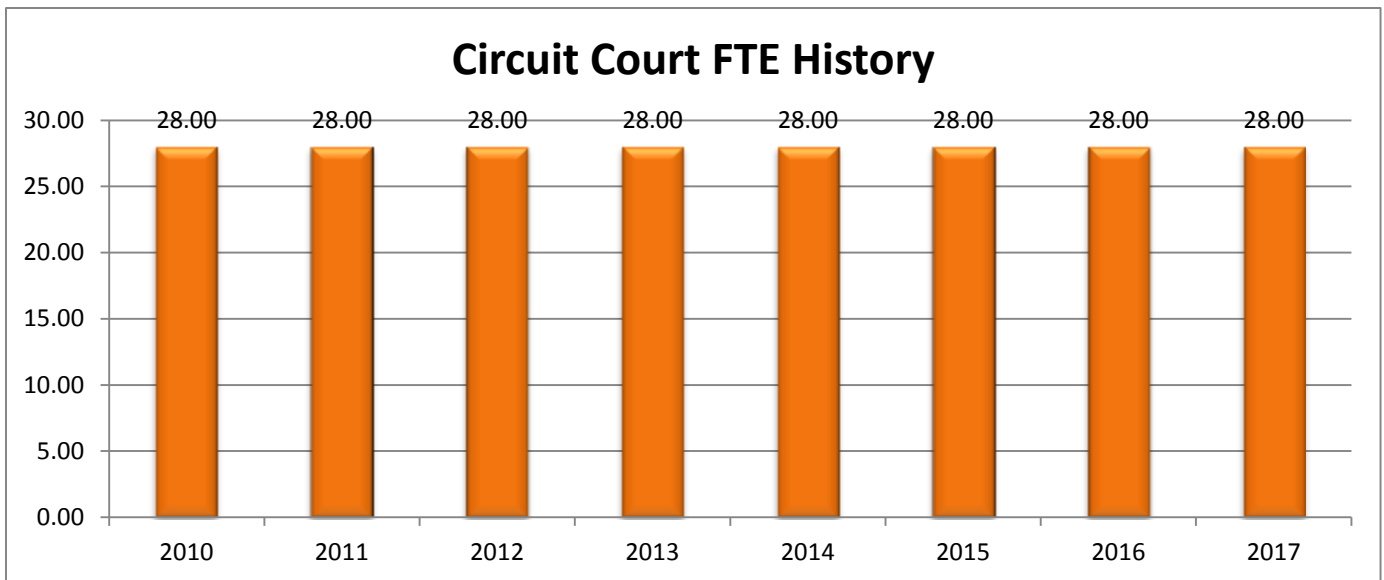
The Circuit Court is the trial court of general jurisdiction for Jackson County. It has jurisdiction over felonies, major civil cases, domestic relations, appeals from courts of lower jurisdiction and agencies. The Probate Court has exclusive legal jurisdiction in matters relating to settlement of estates related to deceased persons, proceedings concerning trusts, guardianships, conservatorships; and proceedings to review and settle the account of a fiduciary. The Family Court has jurisdiction in juvenile delinquency, neglect, abuse, adoptions, and juvenile traffic proceedings.

Accomplishments

- ✓ The Adult Recovery Court Team was successful in securing a three year SAMHSA Grant to provide additional funding for the Recovery Court Program. The total amount of the grant was approximately \$1 million dollars. They also secured a Bureau of Justice Grant, and continued grant awards for the State Court Administration Office. The program is able to service between 70 and 80 participants.
- ✓ The Alternatives to Act 150 State Placement Committee has continued to work with the Judges, DHS, and other community partners to explore and research less expensive placement options for our delinquent juvenile population under court jurisdiction. These efforts continue to be challenging because of reduced state funding for some of these

alternative programs, and the closure of others. These efforts still have resulted in great savings for the Child Care Fund.

- ✓ New video conferencing technology has been installed in all courtrooms and hearing rooms, and also at the Youth Center Detention Facility. These technology improvements have resulted in increased staff time efficiencies, safety and security, and have reduced transportation costs.
- ✓ Court staff members have been able to take advantage of multiple free and low cost trainings on a variety of subjects during the year.
- ✓ The Court Public Satisfaction Survey that was developed by the Supreme Court Administrative Office and given annually to court house customers has yielded some positive results, including:
 - 93% indicated that they were able to complete their court business in a reasonable time.
 - 94% indicated that they were treated with courtesy and respect by court staff.
 - 90% indicated that they were treated with courtesy and respect by the judge/referee/magistrate.

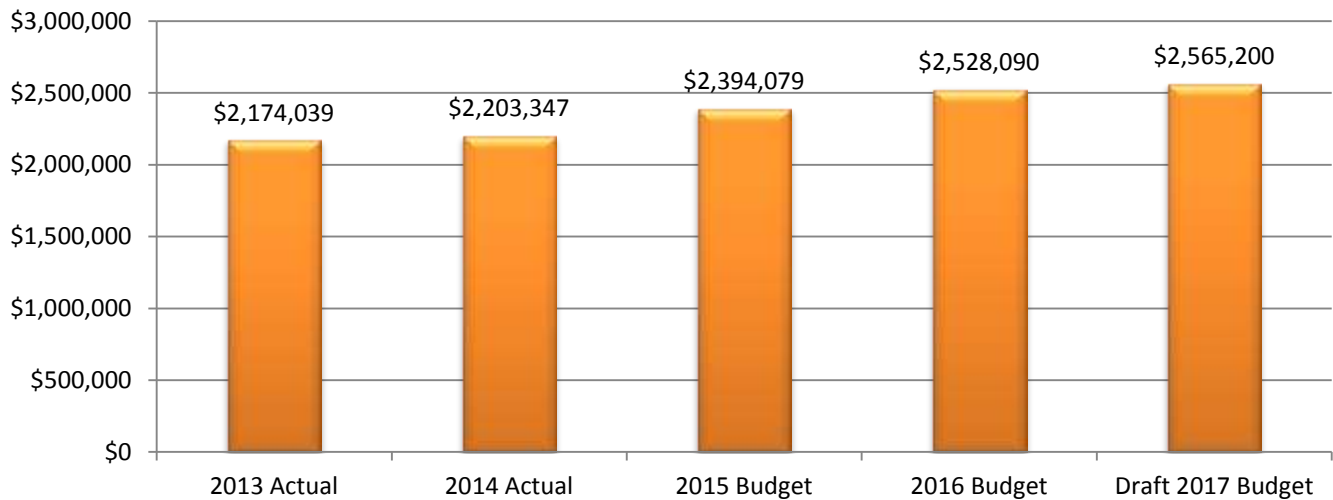


Circuit Court

Expenditure History

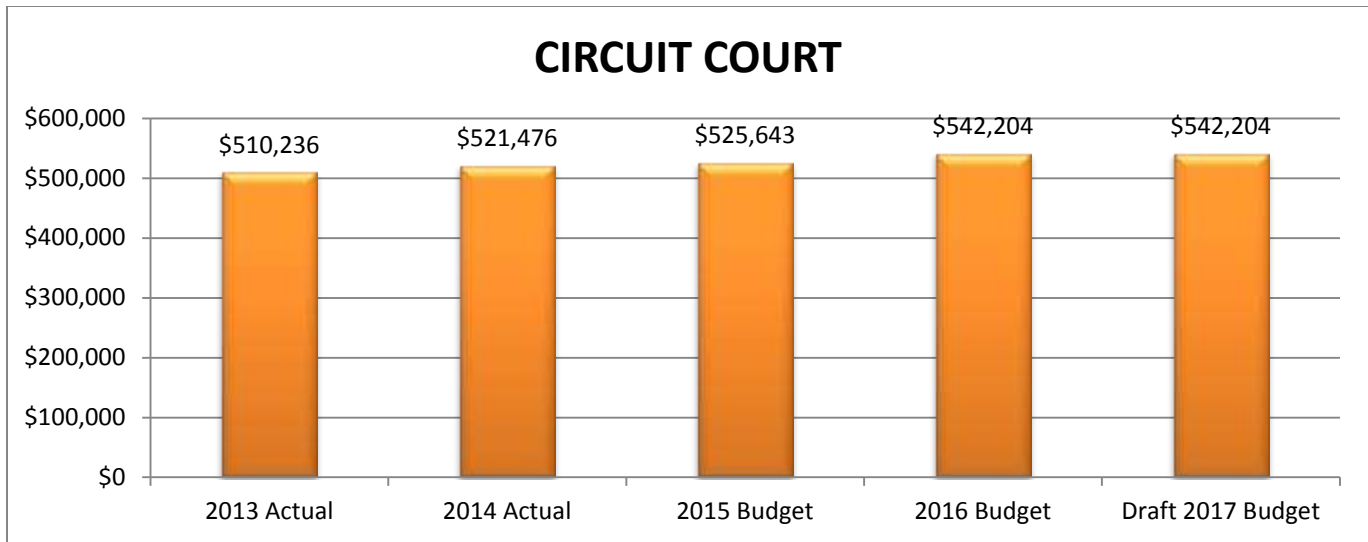
	2013 <u>ACTUAL</u>	2014 <u>ACTUAL</u>	2015 <u>BUDGET</u>	2016 DEPT. <u>REQUESTED</u>	2016 <u>BUDGET</u>	2017 DEPT. <u>REQUESTED</u>	DRAFT 2017 <u>BUDGET</u>
CONTRACT SERVICES	\$121,559	\$112,098	\$123,170	\$127,170	\$127,170	\$127,170	\$127,170
OTHER EXPENSES	\$43,938	\$32,500	\$56,930	\$58,430	\$58,430	\$58,430	\$58,430
PERSONNEL SERVICES	\$1,943,031	\$1,991,618	\$2,148,429	\$2,262,610	\$2,273,790	\$2,310,900	\$2,310,900
SUPPLIES & MATERIALS	\$65,511	\$67,131	\$65,550	\$68,700	\$68,700	\$68,700	\$68,700
TOTAL PROGRAM COST	\$2,174,039	\$2,203,347	\$2,394,079	\$2,516,910	\$2,528,090	\$2,565,200	\$2,565,200

CIRCUIT COURT



Revenue History

	2013 <u>ACTUAL</u>	2014 <u>ACTUAL</u>	2015 <u>BUDGET</u>	2016 DEPT. <u>REQUESTED</u>	2016 <u>BUDGET</u>	2017 DEPT. <u>REQUESTED</u>	DRAFT 2017 <u>BUDGET</u>
CHARGES/FEES	\$81,447	\$88,924	\$102,439	\$102,439	\$109,000	\$109,000	\$109,000
INTERGOVERNMENTAL	\$410,741	\$410,971	\$402,204	\$412,204	\$412,204	\$412,204	\$412,204
OTHER	\$18,048	\$21,581	\$21,000	\$21,000	\$21,000	\$21,000	\$21,000
TOTAL PROGRAM REVENUE	\$510,236	\$521,476	\$525,643	\$535,643	\$535,643	\$542,204	\$542,204



Strategic Outcomes

Indicator	2011 Actual	2012 Actual	2013 Actual	2014 Actual	2015 Target	2016 Target	2017 Target
Percent of respondents who say their overall feeling of safety in Jackson County is excellent or good.	-	ND	49%	ND	55%	-	55%
Percent of respondents who say they feel very or somewhat safe in their neighborhood during the day.	84%	ND	92%	ND	93%	-	94%

ND – Data for the citizen satisfaction survey is only collected in odd years.

Other Key Indicators

Indicator	2011 Actual	2012 Actual	2013 Actual	2014 Actual	2015 Target	2016 Target	2017 Target
Appeals, Admin. Reviews, Writs Filed	89	80	145	100	100	100	100
Criminal Case Filings	758	865	906	935	900	900	900
Civil Case Filings	393	371	379	400	380	380	380
Family Case Filings	3,844	4,200	3864	3650	3600	3600	3600
Probate Case Filings	1,406	1463	1566	1550	1500	1500	1500
Total Full Time Employees	26	26	26	25	25	25	25
Total Part-Time Employees	4	4	4	4	4	4	4



This page intentionally left blank.

Circuit Court Probation

Activities

The Circuit Court supervises offenders using the most appropriate least restrictive and cost effective means. The Court imposes sanctions including removal from the community when appropriate to deter criminal behavior; provides investigative support and information to the Courts, Parole Board, and the Department of Corrections including accurate and timely sentencing recommendations for the courts; and develops and maintains credible and cost effective community sanctions.

Strategic Plan Impact

- ✓ Safe Community

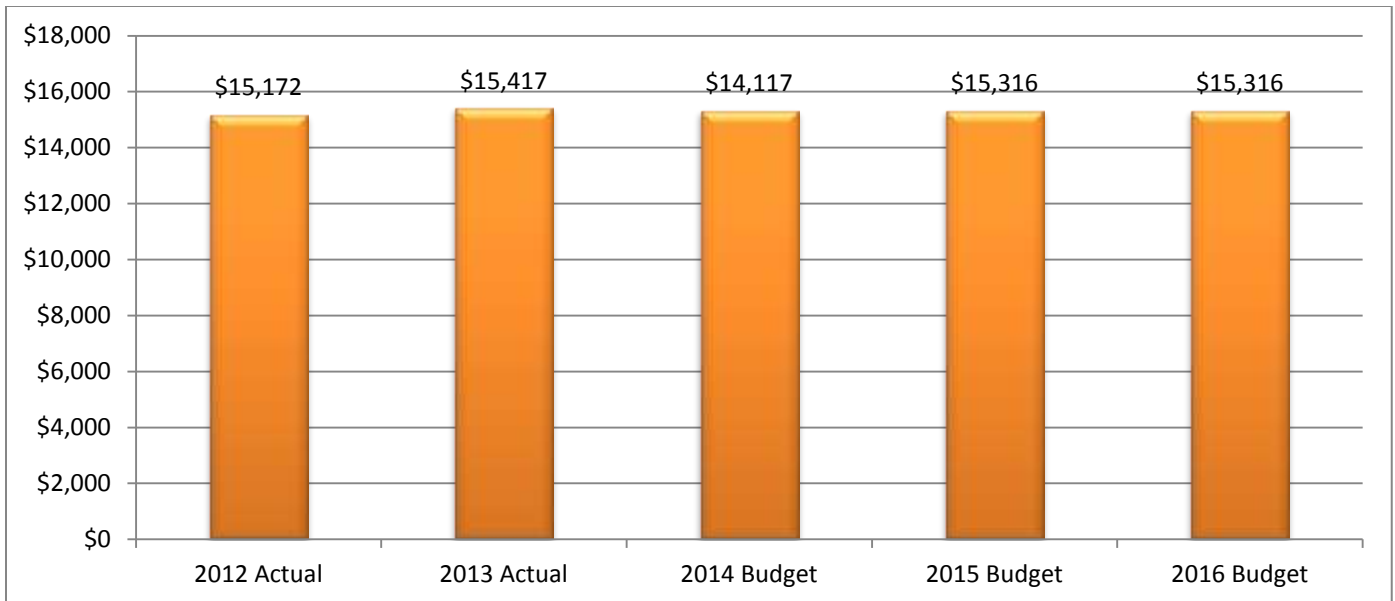
Accomplishments

Budget Adjustments

No significant budget adjustments

Expenditure History							
	2013 <u>ACTUAL</u>	2014 <u>ACTUAL</u>	2015 <u>BUDGET</u>	2016 DEPT <u>REQUESTED</u>	2016 <u>BUDGET</u>	2017 DEPT <u>REQUESTED</u>	DRAFT 2017 <u>BUDGET</u>
SUPPLIES & MATERIALS	\$9,502	\$8,039	\$9,971	\$9,971	\$9,971		
OTHER EXPENSES	\$5,915	\$6,078	\$5,345	\$5,345	\$5,345		
TOTAL PROGRAM COST	\$15,417	\$14,117	\$15,316	\$15,316	\$15,316	\$0	\$0

Circuit Court Probation



Revenue History

	<u>2013 ACTUAL</u>	<u>2014 ACTUAL</u>	<u>2015 BUDGET</u>	<u>2016 DEPT REQUESTED</u>	<u>2016 BUDGET</u>	<u>2017 DEPT REQUESTED</u>	<u>DRAFT 2017 BUDGET</u>
TOTAL PROGRAM COST	\$0	\$0	\$0	\$0	\$15,316	\$0	\$0

See Circuit Court for Performance Data